

# Introducing mPro250 Cordless Tool Controller

May 5, 2025



# Introducing the Cleco mPro250 Cordless Tool Controller

A powerhouse of efficiency, integration, connectivity, and security.

Experience faster performance and streamlined tool integration to boost your productivity.

Benefit from an operating system that provides robust network protection, always keeping your network secure.

Software stays updated with USB accessibility and updates are always free.



# Enhanced Security & Customization

A **best-in-class operating system** with open-source flexibility, robust security, and extensive customization —its encryption ensures essential **network protection** for your overall security.



Linux OS Operating System

- Wi-Fi Authentication supported
  - WEP
  - WPA
  - WPA2-Personal
  - WPA2-Enterprise
  - WPA3-Personal
  - WPA3-Enterprise

# Seamless Connectivity

Unlock exceptional connectivity with the built-in access point, offering an extended **Wi-Fi range of up to 183 meters**.

Benefit from faster upload speeds and compatibility with **2.4 GHz and 5 GHz Wi-Fi**, as well as supports **Bluetooth® 5.1**.\*



# Effortless Integration

The mPro250 controller integrates **up to 16 cordless tools** into one controller, simplifying tool management and enhancing productivity.

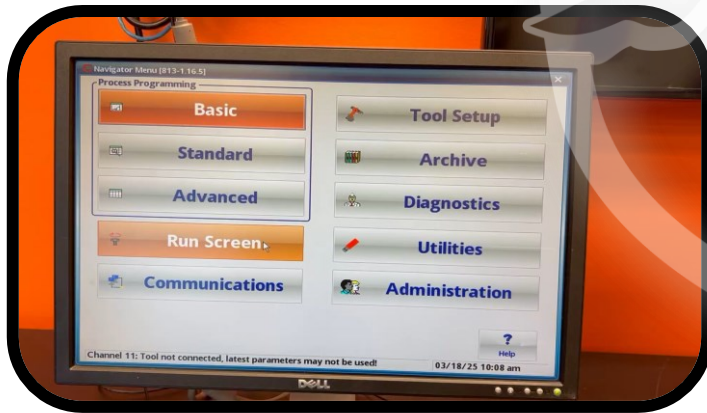
- **Wi-Fi up to 16 tools** with built in access point and plant wireless network.
- **Bluetooth up to 7 tools** with built in access point



Interior  
Antenna

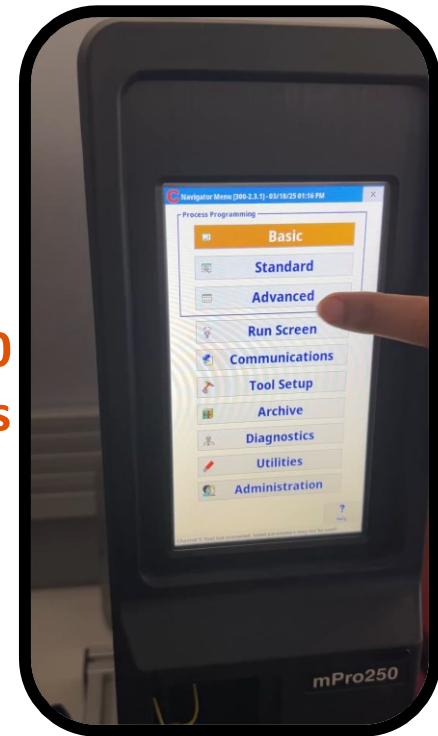
# Streamlined Efficiency

Experience unmatched efficiency with the enhanced touchscreen and operating system, delivering up to **6 times faster performance** over mPro200 controllers.



mPro200  
1.98 seconds

mPro250  
0.33 seconds

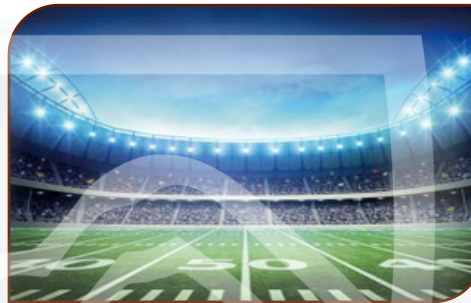




# mPro250 – Product Benefits Overview



## Main Product Benefits



Up to 200 Yard Range  
on AP Version



6X Responsiveness vs.  
mPro200

### Additional Benefits

- Backwards compatibility with Cleco tools
- Accessory support

# Tool/Software Compatibility



Cordless Tool	Supported by mPro250
LiveWire	✓
CellClutch	✓
CellCore	✓
CellTek	✓
CellPulse	✓
iWrench	Q3 2025
Freedom Wrench	Q3 2025





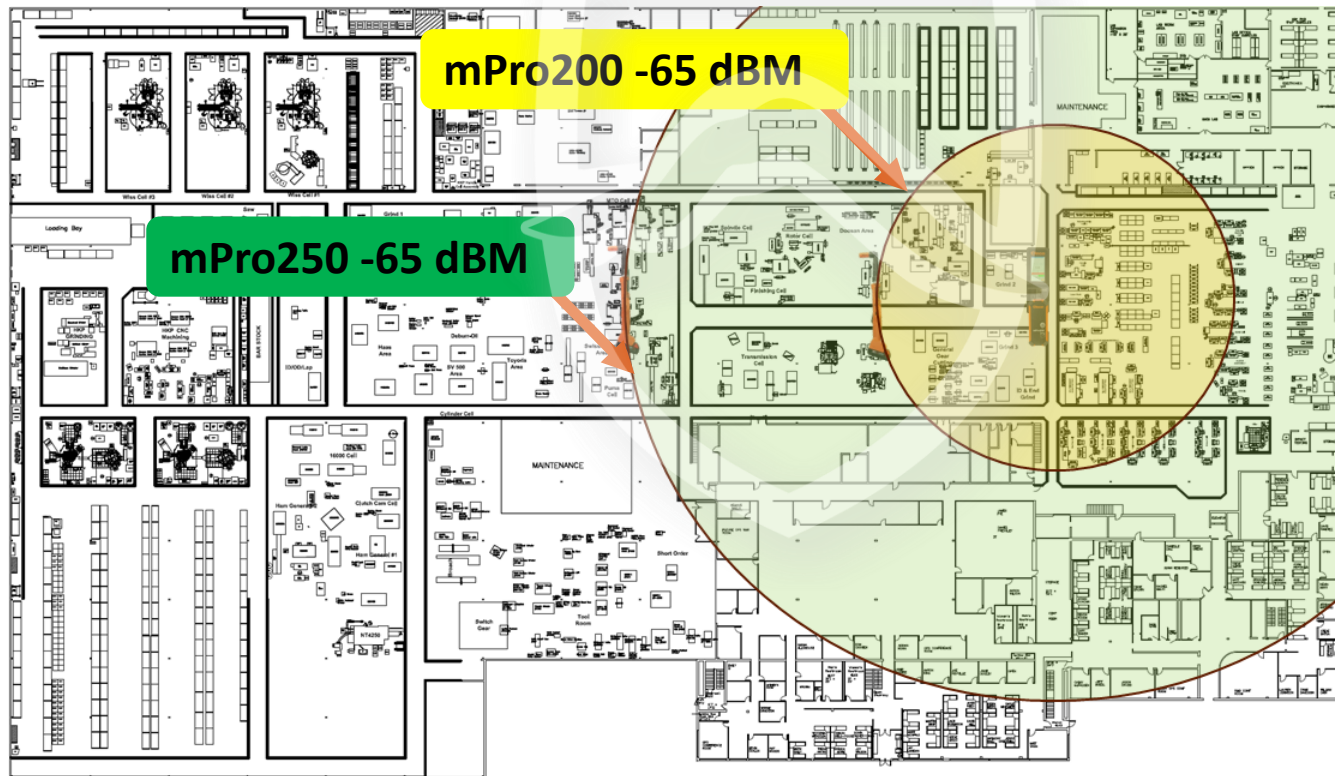
# Competitive Overview



		Low End Competitor	Comparable Competitor	High End Competitor
Tools/Controller	12/16	1 Standard Up to 6 (\$)	10/20	25
Backwards Compatible	✓	No	\$\$	\$\$\$
Accessory Support	✓	Limited	Yes	Yes
Wi-Fi Range	200 Yds	Wi-Fi version Not Released	100 Yds	In Testing

# Wireless Range

- -74 dBm signal strength in a free range of up to **183 Meters (200 yards)**
- mPro250AP version has **150% more wi-fi range** than the mPro200 in a plant environment



# Hardware Review – Main Display

Interactive Touchscreen

Status indicator light

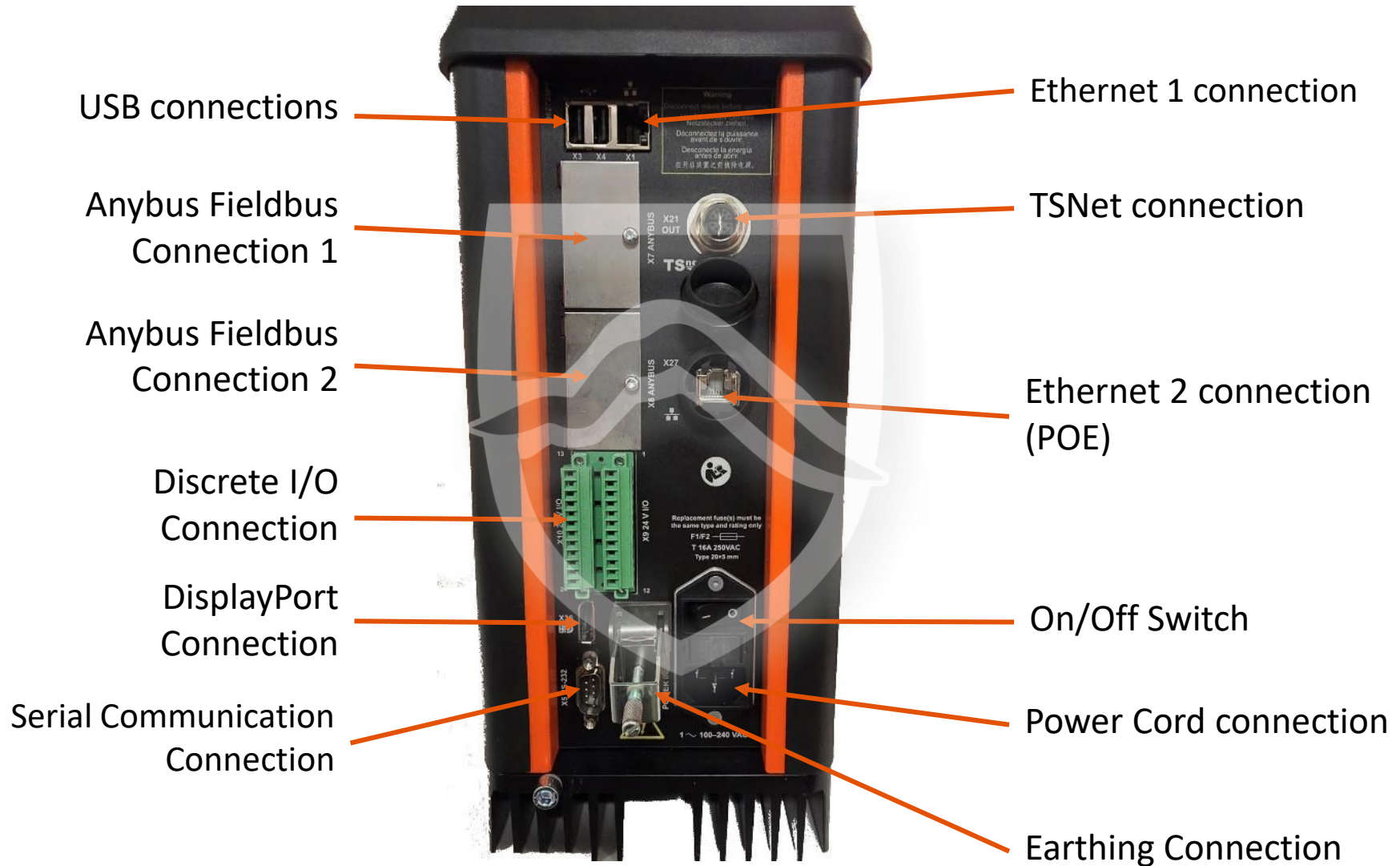
CMID (USB memory)



Access Door

High Power USB Port

# Hardware Review - Connection Points



# Model Numbers

Model	Description
mPro250-NA	mPro250 Controller, Power Cord NA, Software Bundle
mPro250-AP-NA	mPro250 Controller w/Access Point/Bluetooth, Power Cord NA, Software Bundle
mPro250-EMEA	mPro250 Controller, Power Cord EMEA, Software Bundle
mPro250-AP-EMEA	mPro250 Controller w/Access Point, Power Cord EMEA, Software Bundle
mPro250-APAC	mPro250 Controller, Power Cord APAC, Software Bundle
mPro250-AP-APAC	mPro250 Controller w/Access Point, Power Cord APAC, Software Bundle







SLOVAKIA s.r.o.

**INTOOL**

[www.intool.sk](http://www.intool.sk)

***Thank you!***



**Cleco**

| **Tame the Line**